



MORGAN ASSOCIATES

— ESTATE & LETTINGS AGENCY —



5, Bronte Close,
Cheltenham GL51 3NG
£1,200 Per Month



5, Bronte Close,

Cheltenham GL51 3NG

5 Bronte Close is a two-bedroom home featuring a family bathroom, a modern kitchen, and a spacious lounge-diner. It offers two allocated parking spaces (one of which is covered) and a low-maintenance garden with delightful patio area. The property is situated in the sought-after Hatherley area of Cheltenham, conveniently close to local shops, schools, and transport links to the town centre and the M5 motorway.



Floor Plan

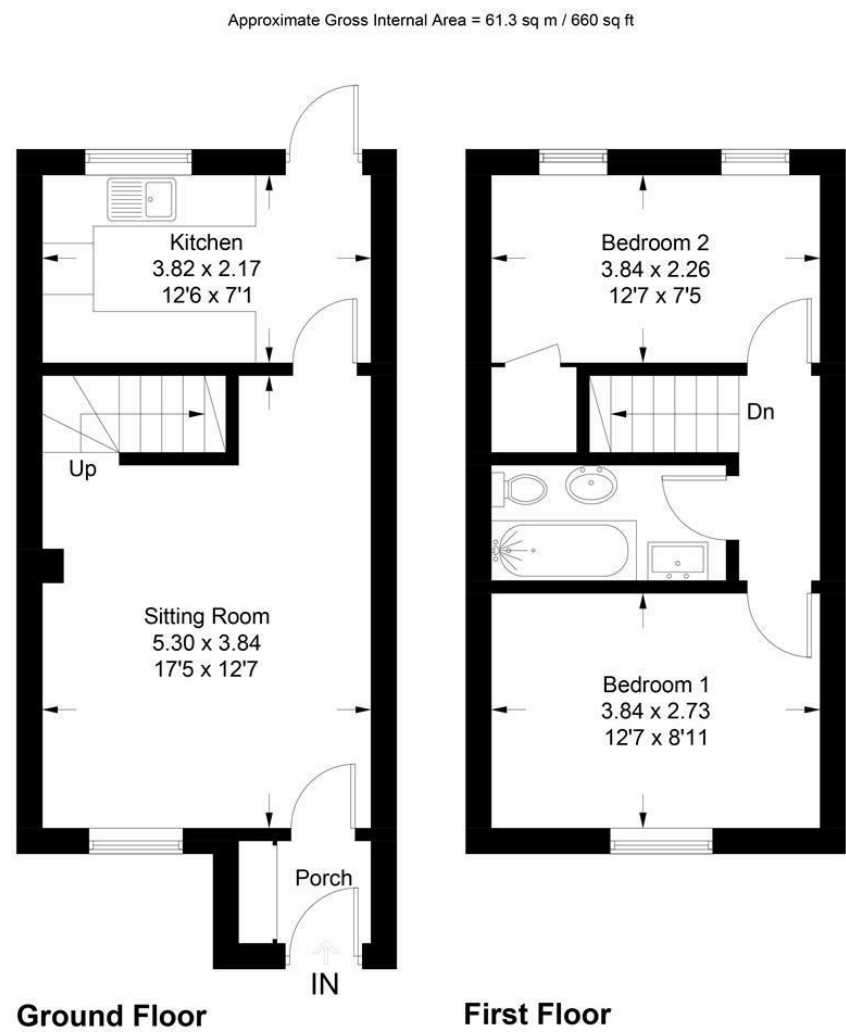
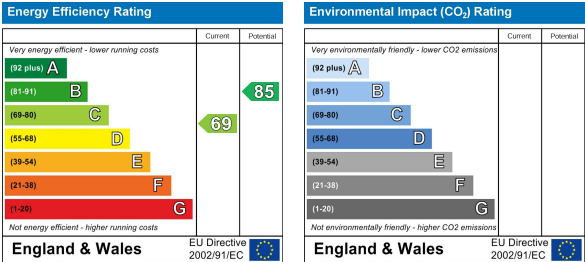


Illustration for identification purposes only, measurements are approximate, not to scale. Fourlabs.co © (1255555)

These particulars, whilst believed to be accurate are set out as a general outline only for guidance and do not constitute any part of an offer or contract. Intending purchasers should not rely on them as statements of representation of fact, but must satisfy themselves by inspection or otherwise as to their accuracy. No person in this firms employment has the authority to make or give any representation or warranty in respect of the property.

Energy Efficiency Graph



Area Map



Viewing

Please contact us on 01242 514 285 if you wish to arrange a viewing appointment for this property or require further information.

Rotunda Buildings Montpellier Exchange
Cheltenham
Gloucestershire
GL50 1SJ

T. 01242 514 285
E. info@morgan-associates.co.uk
W. www.morgan-associates.co.uk

